



ALASKA DIVISION OF HOMELAND SECURITY & EMERGENCY MANAGEMENT



SITUATION REPORT 24-324 • November 19, 2024

Toll-Free 1.800.478.2337

Anchorage Area 907.428.7000

SEOC 907.428.7100

<p><u>SEOC Preparedness Level</u> Level 1-Routine Operations</p>	<p>http://ready.alaska.gov</p>	<p><u>National Terrorism Advisory System:</u> Read the NTAS Bulletin here</p>
<p><u>Maritime Security (MARSEC)</u> Level:1- Minimum Appropriate Security Measures</p>	<p>WHO Novel Coronavirus Pandemic (COVID-19): 2019 Novel Coronavirus</p>	<p><u>Alaska Military Installation Force Protection</u> <u>Level:</u> FPCON Bravo</p>

(Significant changes from previous situation reports are red.)

Significant Issues:

Homer Spit Storm:

On November 16-17, 2024, a storm with strong winds caused wave damage to the Homer Spit and in Ninilchik. Last night the City of Homer declared a local disaster in response to the storm. SEOC has received initial storm road damage information from the Alaska Department of Transportation and Public Facilities.

SEOC is currently working with the Kenai Peninsula Borough and City of Homer to gather storm damage impacts. There are no reports of injuries from this incident.

Point Hope Power Outage:

Iñupiat Community of the Arctic Slope advised SEOC of a power failure in Point Hope this morning. SEOC is in communication with the North Slope Borough. The Point Hope School may be opened as a contingency shelter for residents.

Department of Health (DOH):

For current information, see: <https://health.alaska.gov/dph/Pages/default.aspx>
<https://health.alaska.gov/dph/Emergency/Pages/prepared/default.aspx>

NTAS Bulletin:

The U.S. Department of Homeland Security issued an updated National Terrorism Advisory Bulletin on May 24, 2023. The current and expired bulletins can be viewed at the below link.

<https://www.dhs.gov/national-terrorism-advisory-system>

Travel Alerts and Conditions:

For current driving conditions, dial 511 or visit: <https://511.alaska.gov/>

Barry Arm Landslide / Tsunami Risk:

For the latest information on the Barry Arm Landslide and Tsunami risk, click here:

<https://dggs.alaska.gov/hazards/barry-arm-landslide.html>

Earthquakes:

United States Geological Service (USGS) Earthquake Information: <http://earthquake.usgs.gov/>

National Tsunami Warning Center: <http://tsunami.gov/>

Alaska Volcanoes:

Great Sitkin Alert Level: **Watch** and Aviation Color Code: **Orange**

Mt. Spurr Alert Level: **Advisory** and Aviation Color Code: **Yellow**

For Alaska Volcano updates, go to: <https://www.avo.alaska.edu/>

Air Quality Index (AQI) Advisories:

For the most up-to-date Air Quality Index Advisories:

<http://dec.alaska.gov/Applications/Air/airtoolsweb/Home/Index>

Spills of Oil and Hazardous Substances:

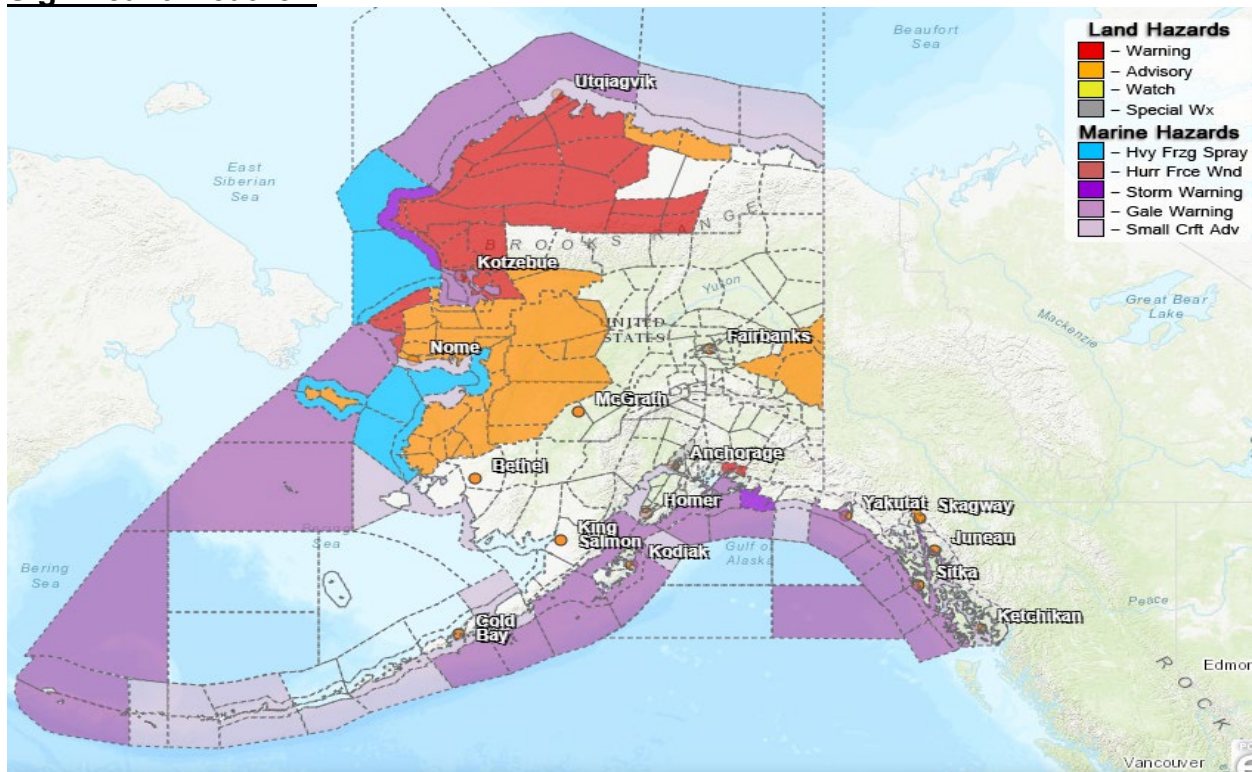
The Alaska Division of Environmental Conservation (ADEC) Spill Prevention and Response page is located at: <https://dec.alaska.gov/spar/>

Alaska Cyber Security Information:

State Employees may sign up for cybersecurity notifications and alerts at:

<https://oit.alaska.gov/security>

Significant Weather:



Special Weather Statement:

- **Matanuska Valley**—strong winds and areas of blowing and drifting snow continues this morning.

Winter Storm Warning:

- **Noatak Valley, Lower Kobuk Valley**-in effect until 3pm Wednesday.

High Surf Advisory:

- **Kivalina and Red Dog Dock**-in effect from 9pm this evening until 9pm Wednesday.

Winter Weather Advisory:

- **Southern Seward Peninsula Coast**-in effect until 3pm Wednesday.
- **Northern Seward Peninsula, Interior Seward Peninsula, Eastern Norton Sound and Nulato Hills, Yukon Delta Coast, Lower Yukon River**-in effect until 3am.
- **Upper Kobuk Valleys, Lower Koyukuk Valley, Middle Yukon Valley, Lower Yukon and Innoko Valleys**-from 1pm this afternoon to 1pm Wednesday.
- **St. Lawrence Island**- remains in effect until 1pm Wednesday.

Blizzard Warning:

- **Kivalina, Red Dog Dock, Baldwin Peninsula, Shishmaref, Bering Strait Coast**-in effect until to 3pm Wednesday.
- **Western Arctic Coast**-in effect until 3pm Wednesday.
- **Western Arctic Plains, Howard Pass and the Delong Mountains**-in effect until 3pm Wednesday.
- **Northwest Arctic Coast, Northern Arctic Coast**-in effect from 9am this morning to 6pm Wednesday.

Wind Advisory:

- **Fortymile Country**-from 6pm this evening 9am Thursday.

High Wind Warning:

- **Northeast Prince William Sound**-in effect until 11 am this morning through Thompson Pass.
- **Central Brooks Range**-in effect until 9am Wednesday in Anaktuvuk Pass.

Cold Weather Advisory:

- **Municipality of Skagway**-in effect from 11pm this evening to 9am.

For more information and the most current Weather, Watches/Warning/Advisories go to:

<https://www.weather.gov/arh/>

The Next Situation Report will be on **November 20, 2024**. An interim report will be prompted by a significant change in the situation or the threat level. This report is posted on the internet at

<https://ready.alaska.gov/sitrep>.

To register for email distribution, PLEASE go to:

<http://list.state.ak.us/mailman/listinfo/dhsem.situation.report>.

Direct questions regarding this report to the SEOC at 907-428-7100 or seoc@alaska.gov.